



‘Sense of Home’ and Nursing Home Residents

Isabella Wirtz
University of Utah

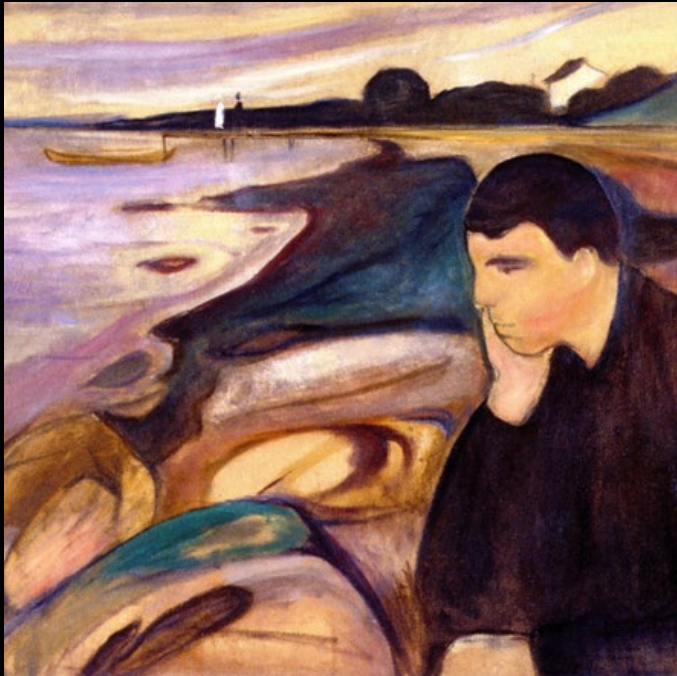


About Me

- Home Uni : *University of Utah*
 - Bachelors of Science in Psychology
 - Mathematics Minor
- Host Uni : *KU Leuven*
 - MeRel Lab : ExiDep project
- Future Goals :
 - Obtain a Masters of Statistics
 - Career in Quantitative Research in Psychology
- Why EuroScholars ?
 - Opportunity to grow knowledge and skills in research
 - Collaborate with the broader community of psychology researchers outside of the U.S.A.



Backgr ound



○ Existential Psychodynamics

- The *existential position* of psychodynamics emphasizing the basic conflict that flows from the individual's confrontation with the *ultimate concerns* of existence (Yalom, 1980, p. 7-8).

○ Four Ultimate Concerns

- *Death*
- *Freedom*
- *Isolation*
- *Meaninglessness*





Backgr ound

○ Meaning In Life

- 3 components
 - *Coherence*
 - *Purpose*
 - *Existential Mattering*

(Costin, 2021, p. 2)

○ ‘Sense of Home’


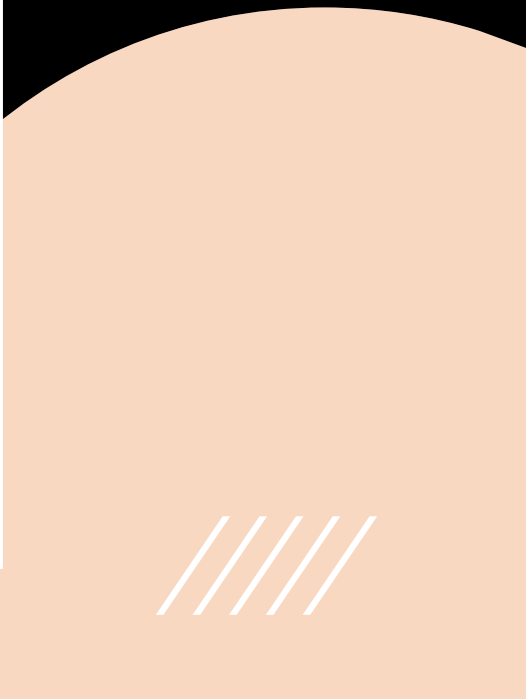

- Multidimensional
 - *Built Environment*
 - *Psychological aspects*
 - *Social aspects*

(Rijnaard et al., 2016, p. 2-3)



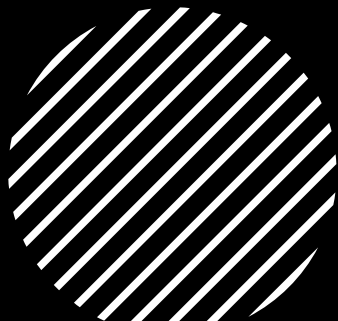
My Research

The aim of my project is to determine if there is a relationship between 'sense of home' and depressed feelings in NH residents
+
determine if this association can be mediated by the experience of meaning in life.





Data Collection and Results



- The ExiDep project is a three-year longitudinal study conducting interviews with nursing home residents using psychometric scales.
- I am currently analyzing cross-sectional data collected last year for the ExiDep project.
- Due to the project timeline agreed upon with my supervisor, I do not have results to show at this time.



Questions?